

Effect of a maternal and newborn health system quality improvement project on the use of facilities for childbirth: a cluster-randomised study in rural Tanzania

Elysia Larson^{1,2}, Anna D. Gage¹, Godfrey M. Mbaruku^{3,*}, Redempta Mbatia⁴, Sebastien Haneuse² and Margaret E. Kruk¹

¹ Department of Global Health and Population, Harvard T.H. Chan School of Public Health, Boston, MA, USA

² Department of Biostatistics, Harvard T.H. Chan School of Public Health, Boston, MA, USA

³ Ifakara Health Institute, Dar es Salaam, Tanzania

⁴ Tanzania Health Promotion Support, Dar es Salaam, Tanzania

Abstract

OBJECTIVES Reduction in maternal and newborn mortality requires that women deliver in high quality health facilities. However, many facilities provide sub-optimal quality of care, which may be a reason for less than universal facility utilisation. We assessed the impact of a quality improvement project on facility utilisation for childbirth.

METHODS In this cluster-randomised experiment in four rural districts in Tanzania, 12 primary care clinics and their catchment areas received a quality improvement intervention consisting of in-service training, mentoring and supportive supervision, infrastructure support, and peer outreach, while 12 facilities and their catchment areas functioned as controls. We conducted a census of all deliveries within the catchment area and used difference-in-differences analysis to determine the intervention's effect on facility utilisation for childbirth. We conducted a secondary analysis of utilisation among women whose prior delivery was at home. We further investigated mechanisms for increased facility utilisation.

RESULTS The intervention led to an increase in facility births of 6.7 percentage points from a baseline of 72% (95% Confidence Interval: 0.6, 12.8). The intervention increased facility delivery among women with past home deliveries by 18.3 percentage points (95% CI: 10.1, 26.6). Antenatal quality increased in intervention facilities with providers performing an additional 0.5 actions across the full population and 0.8 actions for the home delivery subgroup.

CONCLUSIONS We attribute the increased use of facilities to better antenatal quality. This increased utilisation would lead to lower maternal mortality only in the presence of improvement in care quality.

keywords maternal and newborn health, quality, utilisation, Tanzania, cluster-randomised controlled trial, evaluation

Introduction

After two decades of global policy and action focused on increasing the proportion of births occurring in health facilities, many populations have seen a shift in delivery location to health facilities [1, 2]. However, gaps in facility utilisation for childbirth persist in many regions, particularly throughout sub-Saharan Africa (SSA) [1]. High quality facility-based care, with good access to emergency obstetric care, has the potential to reduce preventable maternal and newborn mortality and morbidity [3, 4].

Improving utilisation, therefore, remains an important, unfinished global priority.

Maternal characteristics, such as education, socio-economic status, and parity, are often cited as reasons for incomplete facility utilisation [5]. Similarly, many efforts to increase facility utilisation for childbirth have focused on the demand side; for example, providing travel vouchers, fee exemption, community education and text message reminders [6–8]. While some demand-side interventions have been successful in increasing facility utilisation, recent evidence suggests that quality plays an important role in motivating (when quality is strong) or dissuading (when quality is weak) utilisation [9, 10].

*Deceased.

The quality of care available to women in many low- and middle-income countries is both low and inequitably distributed [11–14]. Studies in SSA have demonstrated women's preference for high-quality obstetric care, including a desire to deliver with competent and kind healthcare providers [15–17]. In addition, their judgment of quality of care is related to both how they are treated and the comprehensiveness of services [18]. Women frequently bypass lower-level clinics in favour of health centres and hospitals, where they are likely to receive better quality care [11, 19–21]. Interventions focused on improving the quality of maternal and newborn healthcare are on the rise, with success measured by changes in quality or health outcomes [22–24]. However, because of women's preference for, and ability to distinguish high quality care, facility utilisation may also increase when quality improves. To date there is little evidence from randomised studies of the effect that quality may have on utilisation.

In this study we assess the impact of a quality improvement program on facility utilisation for delivery, using a cluster-randomised controlled study in Tanzania. Given that the implementation evaluation did not find meaningful improvement in quality of obstetric care, we explored alternative pathways between program investments and utilisation of services. Broadly, these findings are relevant for understanding how investments in the health system may influence user behaviour.

Methods

Study setting, design and participants

The maternal and newborn health quality improvement (MNH+) study was implemented in four rural districts of Pwani Region, Tanzania: Bagamoyo, Kibaha Rural, Kisarawe, and Mkuranga. The study is registered through ISRCTN (<http://www.isrctn.com/ISRCTN17107760>). Government-managed primary care facilities (i.e., dispensaries) and their official catchment areas define the clusters for this study. Facilities were eligible for inclusion in the MNH+ study if they were supported for prevention of maternal to child transmission of HIV care by a local non-governmental organisation (Tanzania Health Promotion Support, THPS) and had at least one skilled healthcare provider at the start of the study (e.g. a nurse or clinical officer). From the eligible facilities, within each of the four districts the six facilities with the highest volume of deliveries between January and June 2011 were chosen, resulting in 24 study facilities. At baseline, three of six facilities within each district were randomly selected to receive the MNH+ intervention (12

facilities total). Random selection was conducted by drawing facility names from a hat in the presence of representatives from the research team and the regional medical office.

The intervention included three components to improve facility quality: infrastructure improvement (facility upgrades and ensuring basic equipment and supplies), provider training and supervision (continuing medical education, supportive supervision and mentoring), and peer outreach to promote facility utilisation for childbirth within the official catchment communities. Implementation of the intervention began in June 2012; by July 2013 the full intervention was underway and continued until after endline data collection was completed.

Women were eligible to participate if they had delivered a child 6 weeks to 1 year prior to interview, lived in the catchment area of a study facility, and were at least 15 years of age. All survey participants provided written, informed consent, or assent together with permission from a guardian in the case of minors, prior to participation. Ethics review boards in both Tanzania, Ifakara Health Institute and the National Institute for Medical Research, and in the U.S., Columbia University and Harvard University, approved this study.

Data collection and variables

The baseline round of data collection was conducted from 13 February to 28 April 2012. Midline data were collected from 3 February 2014 to 31 March 2014. The endline round was conducted from 20 January to 7 April 2016. At baseline and endline the study team enumerated all households in each catchment area and invited all eligible women to participate in the study. During the midline data collection, the study team again enumerated all households in each catchment area to create a list of eligible women. From this list, a simple random sample of 60% of women stratified at the facility level was invited to participate in the study.

Trained Tanzanian research assistants conducted the household survey in Swahili using hand-held tablets. Tanzanian research staff translated the survey to Swahili and back-translated to English by consensus. In our prospective analysis plan we determined a limited set of predictors of utilisation that would be included in statistical analyses. To select these predictors we started from Anderson's utilisation model of predisposing characteristics and a review of recent literature [20, 25, 26]. The individual-level demographic factors included women's religion, age, marital status, parity, educational achievement, primary occupation, and season of delivery. We constructed an indicator of relative household wealth

E. Larson *et al.* **Effect of a quality improvement project on the use of facilities for childbirth**

using principal components analysis of an 18-question asset index [27]. To indicate a woman's exposure to mass media we constructed an additive media index utilising three questions that are also measured in the DHS: frequency of exposure to radio, newspapers, and TV (range 0–9). Finally, as an indicator of potentially changing community-level physical access to the health system, we included an indicator for whether a woman's village had a paved road.

To assess potential pathways through which the intervention could affect utilisation (analyses described below) we collected information on antenatal care (ANC) quality, perceived obstetric quality, link between facility and community, and payment for obstetric care. For ANC quality we asked women if they had received the following during antenatal care and created an index of nine items: weight measured, height measured, blood pressure measured, urine sample collected, blood sample collected, tetanus injection administered, iron supplements provided, antimalarial medications provided and counselled on pregnancy complications. We also asked them to rate their perceived quality of ANC and separately their perceived quality of obstetric care on five-level Likert scales ranging from poor to excellent. We categorised high-perceived quality as a rating of 'very good' or 'excellent'. To assess the link between the facility and community we asked women if they had heard of a quality improvement program in their local facility. Finally, to measure their payment for care we asked women how much they paid for all services, including any informal payments, or tips.

Statistical analysis

Completed surveys were formatted as CSV files and imported into Stata version 14.1 for cleaning and analysis. The primary study outcome was facility utilisation for childbirth, which was measured as the proportion of women in the facilities' official catchment area whose most recent delivery occurred in a healthcare facility. Women who reported delivering on the way to a facility were removed from the analysis (72 women, 1.2%). We conducted descriptive statistics of the primary outcome as well as the level of facility women delivered at (i.e. dispensary, health centre, or hospital), women's place of delivery for her delivery prior to the index child (the *index child* is defined as the woman's most recent delivery), and demographic and household characteristics.

To illustrate the changing patterns of utilisation we plotted the proportion of deliveries that occurred at any health facility with lowest trends for each month. The graph includes all months where the entire month fell within eligibility for participation in the study (April

2011–January 2012, April 2013–January 2014, April 2015–January 2016).

To measure the effect of the MNH+ intervention on facility utilisation for childbirth we conducted a difference-in-differences analysis. This analysis controls for both differences between utilisation patterns between facilities at baseline and changing patterns over time that are external to the intervention, but consistent across the region. In all models a fixed effect for district was included to account for stratification of the study facilities by district during the design phase. We used generalised estimating equations with an exchangeable correlation structure and a log link to estimate risk ratios for all models [28]. The robust sandwich estimator was used to account for clustering at the facility level.

In order for the difference-in-differences coefficient to be a valid estimator of causal effect, the parallel trends assumption must be satisfied; that is the assumption that in the absence of the intervention the intervention and control facilities would have had similar increases in facility utilisation for childbirth. We tested this assumption by creating a dataset of repeat cross-sectional data for each month where we had birth data for at least 10 women prior to start of the intervention. We conducted several additional robustness checks and sensitivity analyses, which are described in the Appendix S5. These included different evaluation models (e.g. a post-only analysis), and different statistical methods (e.g. Fischer Permutation tests).

Recognising that women who have previously delivered at home have an increased likelihood of subsequent home delivery [29], we conducted a secondary analysis in which our sample was restricted to women whose most recent delivery prior to her *index child* was a home birth to test whether the intervention had a differential effect on this group (Appendix S3). This difference-in-differences analysis of women with previous home births was not pre-specified but added when baseline data indicated high overall utilisation relative to hypothesised levels. This allowed us to explore effects of the intervention on a group that has historically been difficult to reach with safe delivery coverage expansion efforts. We found evidence of modification of the effect of the intervention by place of a woman's previous birth and therefore conducted a stratified analysis by women whose delivery prior to her index child was a home birth versus women whose prior delivery was a facility birth or were primiparous.

We explored four pathways through which an investment in quality could lead to increased utilisation of facilities for childbirth: ANC quality, perceived obstetric quality, link between facility and community and payment for obstetric care (Figure 1). Our model is informed

by prior theoretical work as well as empirical evidence demonstrating women's stated and revealed preferences for high quality care [5, 17, 25, 30, 31]. Because the implementation evaluation found that the intervention did not affect the quality of delivery care, we do not present these results here. For each pathway we explore first the effect of the intervention on the intermediary outcome, then the association between the intermediary outcome and facility utilisation for childbirth at baseline.

Results

In 2012 the study team enumerated 30 076 households, identifying 3238 eligible women and interviewing 3019

(response rate of 93.2%). The flow diagram can be found in Appendix S1. In 2016 the study team enumerated 36 390 households, identifying 3779 eligible women. We interviewed 3575 women, resulting in a response rate of 94.6%. Of those women, 3146 had delivered their child in the 6 weeks to 1 year prior to delivery and were eligible for inclusion in this analysis. The resulting sample size was 6083 observations and 5992 unique women. 91 women delivered and were interviewed twice in the study period.

The average age of respondents was 27 years old in the intervention and control groups at baseline and endline. The proportion of women who had completed any secondary school was seven percentage points higher at

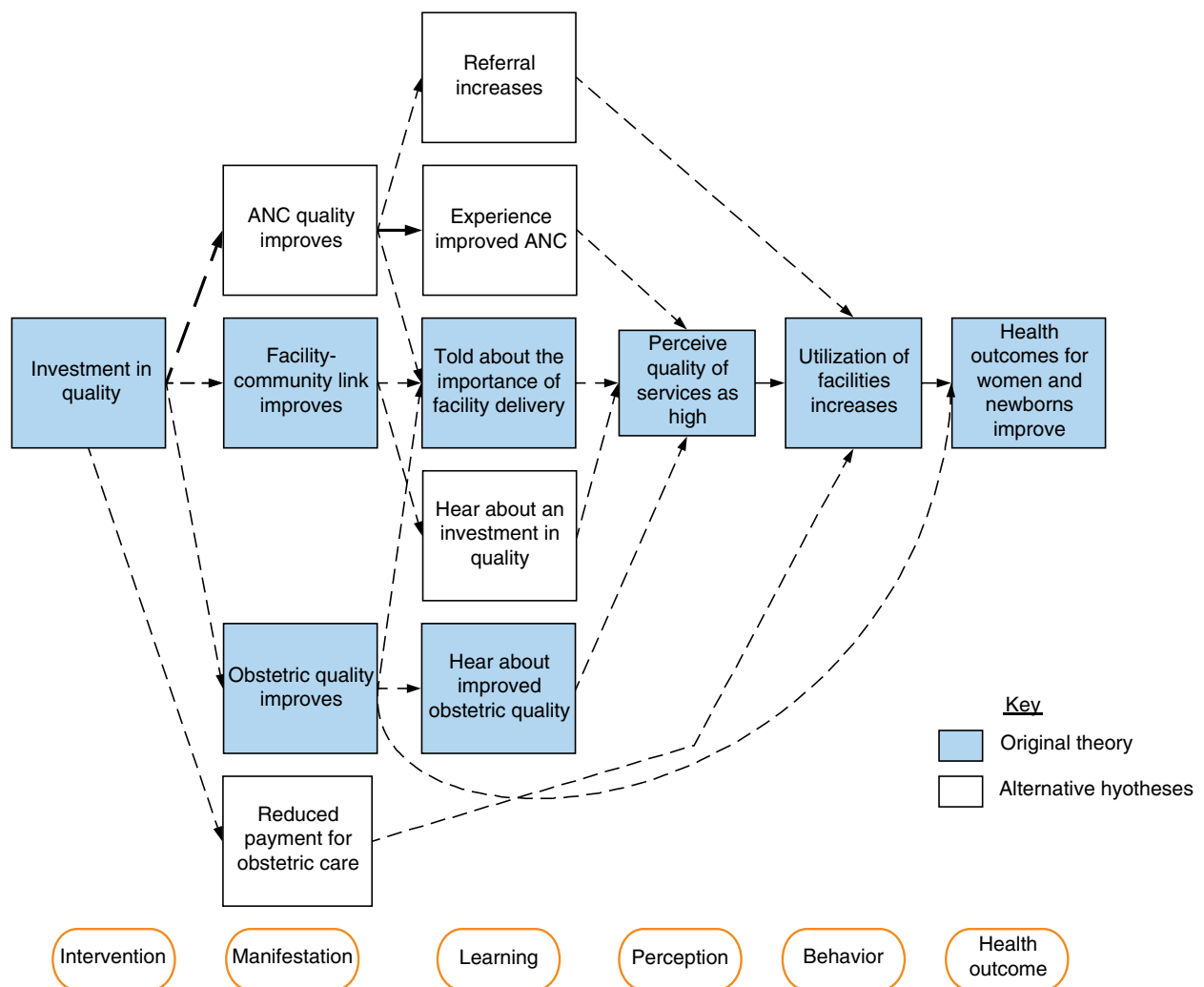


Figure 1 Conceptual framework for pathways through which investment in quality could affect facility utilisation for childbirth. [Colour figure can be viewed at wileyonlinelibrary.com]

E. Larson *et al.* Effect of a quality improvement project on the use of facilities for childbirth

endline than baseline in both the control (17%) and intervention (15%) groups. At endline 91% of women reported living in a household with a mobile phone and nearly a quarter reported having electricity (Table 1). Covariates appear largely balanced at baseline.

At baseline, 72.3% of women living in control catchment areas delivered their most recent child in a health facility, compared to 71.7% of women living in intervention catchment areas (the intracluster correlation was 0.10). The proportion of women delivering in health facilities increased at endline to 81.1% of women in control catchment areas and 85.3% of women in intervention catchment areas. The intervention therefore led to a relative increase in facility deliveries of 10% (RR: 1.10; 95% confidence interval (CI): 1.00, 1.21). The adjusted relative risk is 1.08 with a 95% CI of 0.98, 1.19 (Table 2). This translates to an absolute increase of 6.7

percentage points (95% CI: 0.6, 12.8) in a linear model and 6.1 percentage points (95% CI: -0.8, 13.1) in an adjusted linear model. Our interrupted time series analysis suggested that the parallel trends assumption was satisfied: the relative difference in the trend of facility birth between the intervention and control group prior to the intervention was 0.99, *P*-value: 0.488 (Figure 2 and Appendix S5).

We assessed the pattern of deliveries by facility level over time and found that the decline in home deliveries was explained by an increase in deliveries at both the intervention facility and higher-level facilities, such as health centres and hospitals (Appendix S6). When looking specifically at utilisation of the study facility as the outcome of interest (compared to other facility or home delivery), the relative risk was 1.04 (95% CI of 0.76, 1.43).

Table 1 Descriptive statistics of women delivering in Pwani region, Tanzania (2011–2012 and 2015–2016)

	Baseline		Endline	
	Control (<i>n</i> = 1586)	Treatment (<i>n</i> = 1393)	Control (<i>n</i> = 1739)	Treatment (<i>n</i> = 1365)
Demographics				
Age (mean)	27.2	27.0	27.2	27.0
Education (categorical)				
No formal	25%	28%	20%	21%
Some primary	13%	13%	11%	9%
Completed primary	51%	51%	51%	54%
Any secondary	10%	8%	17%	15%
Farmer or homemaker	82%	82%	78%	77%
Muslim	79%	84%	71%	78%
Married or living with partner	82%	83%	82%	81%
Household assets				
Media index (mean)†	3.37	3.18	3.38	3.25
Household wealth: richest 20%‡	22%	18%	31%	25%
Mobile phone	73%	74%	91%	91%
Electricity	7%	5%	23%	25%
Consumes > 2 meals per day	90%	90%	90%	88%
Delivery characteristics				
Primipara	25%	23%	27%	28%
Birth during harvest season	17%	17%	20%	22%
Previous delivery at facility	59%	62%	76%	76%
Delivery at facility§	72%	72%	81%	85%
Community characteristics				
Village has paved road	29%	43%	35%	43%
District				
Bagamoyo	42%	42%	53%	53%
Kibaha rural	11%	10%	12%	8%
Kisarawe	25%	25%	20%	25%
Mkuranga	22%	22%	15%	13%

†Media index range (0, 12).

‡Wealth index constructed using baseline asset weights for both baseline and endline cohorts.

§Dependent variable.

Table 2 Effect of MNH+ intervention on facility utilisation for childbirth, unadjusted and adjusted difference-in-difference analyses

	Full population			Previous home birth Unadjusted			Previous facility birth or primiparous Unadjusted		
	Unadjusted		Adjusted	Unadjusted		P-value	Unadjusted		P-value
	RR	95% CI	P-value	aRR	95% CI	P-value	RR	95% CI	P-value
Difference-in-difference									
Effect of MNH+	1.10	1.00, 1.21	0.041	1.08	0.98, 1.19	0.112	1.42	1.17, 1.71	<0.001
Year indicator	1.13	1.06, 1.21	<0.001	1.12	1.05, 1.20	<0.001	1.10	0.96, 1.26	0.187
Intervention indicator	0.90	0.77, 1.05	0.177	0.91	0.81, 1.03	0.132	0.86	0.66, 1.12	0.265
Participant characteristics									
Age (years)				1.00	1.00, 1.00	0.695			
Religion (Muslim)				1.01	0.98, 1.03	0.614			
Education				Reference					
No formal				1.05	0.99, 1.11	0.115			
Some primary				1.11	1.07, 1.15	<0.001			
Completed primary				1.11	1.06, 1.16	<0.001			
Any secondary				1.03	0.99, 1.08	0.094			
Birth during harvest season				1.08	1.04, 1.12	<0.001			
Primipara				1.01	1.00, 1.02	0.002			
Media use index				Reference					
Wealth quintile				1.08	1.04, 1.13	<0.001			
Lowest				1.21	1.12, 1.30	<0.001			
Lower middle				1.23	1.11, 1.35	<0.001			
Middle				1.31	1.17, 1.46	<0.001			
Higher middle				0.95	0.93, 0.98	<0.001			
Highest				1.00	0.97, 1.03	0.994			
Farmer or homemaker				1.12	0.96, 1.31	0.145			
Married				Reference					
Community characteristics									
Village has a paved road				Reference			Reference		
District				1.18	1.02, 1.36	0.027	1.27	0.87, 1.85	0.209
Bagamoyo				1.11	0.98, 1.26	0.115	1.32	0.92, 1.88	0.130
Kibaha Rural				1.30	1.14, 1.49	<0.001	1.54	1.05, 2.25	0.027
Kisarawe				6083			1375		
Mkuranga				6003					
Observations									

The predictor of interest is the 'effect of MNH+', which is the interaction between time (year dummy variable) and intervention indicator (whether or not the facility was in the intervention group). We used generalised estimating equations with an exchangeable correlation structure and a log link to estimate risk ratios. This accounts for clustering at the facility level. District is included in both the unadjusted and adjusted models to account for the study design: facilities were stratified by district prior to randomisation. Previous home birth refers to the birth immediately prior to the index child in women who reported two or more births.

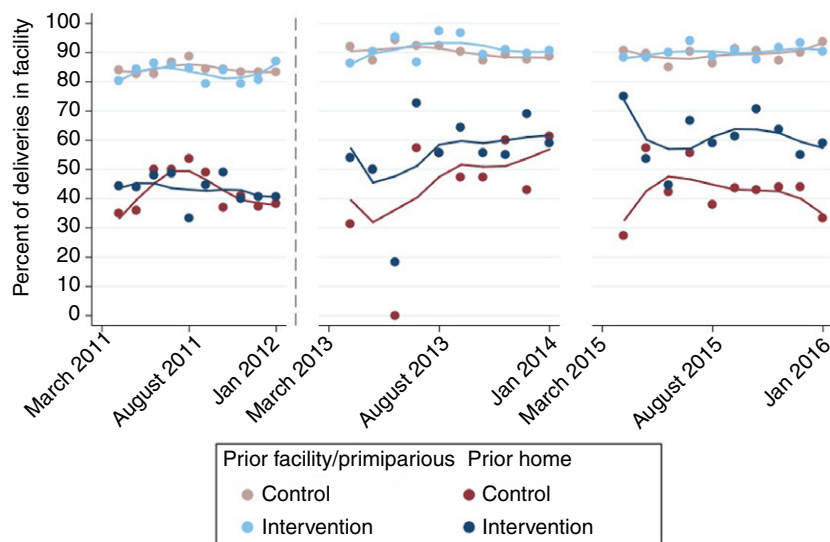


Figure 2 Trends in facility deliveries; proportion of deliveries occurring at any health facility by month stratified by previous home delivery. Notes: Previous home delivery group are women whose birth prior to the index child was at home. Previous facility/primiparous group are women who either were primiparous for the index child or delivered their last child in the facility. Solid lines represent lowest trends. The intervention began June 2012 and is denoted by a vertical dashed line. [Colour figure can be viewed at wileyonlinelibrary.com]

Of the women interviewed at baseline who had previously delivered a child, 39.4% reported delivering their previous child at home (40.5% in control facilities and 38.1% in intervention facilities). These women were older, had less education and lower wealth than the full sample (Appendix S2). At baseline, women whose previous child was delivered at home had visited the health facility an average of 4.1 times in the past year and 56.6% had more than three ANC visits; women whose previous child was not delivered at home, or who were primiparous visited the health facility an average of 4.6 times in the past year and 65.7% had more than three ANC visits.

We assessed the effect of the MNH+ intervention among the population of women who had a home delivery immediately prior to the index child. The intervention was associated with a 40% relative increase in facility delivery (RR: 1.42, 95% CI: 1.17, 1.71). Adjusting for covariates resulted in an adjusted RR of 1.43 and 95% CI of 1.14, 1.79 (Table 2).

Within the full study population, the intervention led to the equivalent of an average of 0.5 additional ANC services received out of nine measured (RR: 1.65, 95% CI: 0.99, 2.74). The effect was stronger among the sub-population of women whose most recent birth was at home (RR: 2.17, 95% CI: 1.23, 3.81). Among the sub-population of women with their previous birth at home the perception of perceived quality of ANC care was also higher (RR: 1.54, 95% CI: 1.05, 2.27). The intervention led to a reduction in payment for obstetric care among women delivering in their local facility by 3.06 USD (−3.06, 95% CI: −6.04, −0.08). Other assessed measures

along the pathway from quality investment to increased utilisation were not affected by the utilisation (Table 3 and Appendix S4).

Discussion

The MNH+ health system quality improvement intervention resulted in a modest increase in overall facility utilisation. The increased relative risk of 10% corresponds to an absolute increase in utilisation of 6.7 percentage points (95% CI: 0.06, 12.8). The effect of the intervention was stronger among the cohort of women who had delivered their last child at home, among whom the intervention led to an absolute increase in facility delivery of 18.3 percentage points (95% CI: 10.1, 26.6).

This increased utilisation was likely a response to visible efforts to improve the health system (Appendix S7). Past research has shown that one pathway through which facility utilisation for delivery may increase is through better antenatal care (ANC) [32]. While improvements in ANC was not the primary focus of this intervention, the equipment and medications supported by the intervention (e.g. blood pressure cuffs and iron tablets), as well as the mentoring and support delivered could have led to improvements in ANC. Our results demonstrate that particularly among the population of women with past home delivery, the intervention led to an improvement in the number of ANC services received. In addition, we hypothesise that seeing the system investment in quality led to an increased interest in the system, spreading confidence in the system as a whole. This is in line with

Table 3 Effect of the MNH+ intervention on intermediary outcomes, unadjusted and adjusted difference-in-difference analyses

Intermediary outcome	Full study population		Previous home birth	
	RR (95% CI)	Adjusted RR (95% CI)	RR (95% CI)	Adjusted RR (95% CI)
ANC quality improves				
Content of ANC care (index of 9 items, † mean (SD))	1.65 [0.99–2.74]	1.64 [1.00–2.71]	2.17 [1.23–3.81]	2.31 [1.44–3.71]
Perceived quality of ANC care	1.12 [0.87–1.46]	1.14 [0.88–1.47]	1.54 [1.05–2.27]	1.57 [1.07–2.31]
Facility-community link improves				
Heard of a quality improvement program in local facility	1.11 [0.30–4.10]	1.06 [0.26–4.32]	1.23 [0.39–3.90]	1.14 [0.36–3.64]
Perceived obstetric quality improves				
Perceived quality of delivery care at local MNH+ facility	1.13 [0.79–1.61]	1.13 [0.79–1.62]	1.13 [0.79–1.60]	1.12 [0.78–1.59]
Reduced payment for obstetric care				
Payment for care at local facility (USD), mean (SD)	–3.06 [–6.04 to –0.08]	–3.76 [–7.02 to –0.49]	–1.48 [–3.81 to 0.85]	–2.24 [–4.76 to 0.28]

The predictor of interest is the ‘effect of MNH+’, which is the interaction between time (year dummy variable) and intervention status. We used generalised estimating equations with an exchangeable correlation structure and a log link to estimate risk ratios. This accounts for clustering at the facility level. District is included in both the unadjusted and adjusted models to account for the study design: facilities were stratified by district prior to randomisation. Previous home birth refers to the birth immediately prior to the index child in women who reported two or more births.

†The index of antenatal care includes: weight measured, height measured, blood pressure measured, urine sample collected, blood sample collected, tetanus injection administered, iron supplements provided, antimalarial medications provided and counselled on pregnancy complications.

results seen at baseline, which demonstrated that women were less likely to bypass their local clinic if it had received a renovation in the previous year [20].

An increase in utilisation after seeing quality improvement efforts is also consistent with the ‘active patient’ model, where communities alter their behaviours based on signals of improvement in the health system and communication of this to communities [21]. A recent evaluation of a maternal and newborn health quality improvement program in Zambia (‘Saving Mothers Giving Life’) found a similar positive effect on facility utilisation for childbirth [33]. They posit that the key activities involved in the intervention included community-based volunteers who were meant to promote facility deliveries and birth preparedness, similar to the ‘peer mamas’ in the MNH+ intervention. These volunteers may be one successful way to link supply-side quality improvement efforts to the communities they are meant to benefit [33–35].

It is important to note that the increased utilisation caused by the intervention cannot improve health outcomes without a concurrent improvement in obstetric healthcare quality at the facilities where women are delivering. An evaluation of the effect of the MNH+ intervention on quality in the study facilities found that obstetric quality did not improve. Furthermore, we did not find a

difference in women’s perception of obstetric care quality in this study. This may in part explain our finding that a large portion of the increased utilisation in intervention facilities occurred in higher-level facilities (29% of deliveries at baseline compared to 38% at endline occurred in either health centres or hospitals), which are likely to offer higher quality and more comprehensive obstetric care than primary care clinics [11].

The finding that some of the increase in facility utilisation was seen at higher-level health facilities is consistent with several additional hypotheses. First, the QI intervention may have led providers to recognise the limitations of delivery care provided at the primary care level and encouraged an increase in referrals to health centres and hospitals. Second, the investment in QI combined with the peer outreach program extolling the importance of facility care may have successfully increased women’s motivation to access the highest quality of care that they are able to, which is likely at higher-level facilities. Third, the focus on quality may have led community members to recognise that even with the QI activities, the quality of care on offer at their local clinic was still inferior to that available at higher-level facilities.

This is one of the first studies to look at the effect of a facility quality intervention on women who have delivered at home in the past. While this was not a pre-

specified focus of the research, given the background of overall high facility utilisation, this group emerged as an important subpopulation that is at greater risk for home delivery and potentially poor outcomes. For example, a recent study in 39 LMIC found that among women who had their first delivery at home, fewer than 12% switched to a facility for the second delivery [29]. In our study population, the effect of the QI intervention was much stronger among these women, suggesting that their choice to remain home in the past may have been due to lack of high-quality facility options nearby. It is noticeable that the intervention did not have an effect on women whose prior delivery was at a health facility. This finding would be unsurprising if the default for these women was to deliver in a health facility – in the same study discussed above, nearly 80% of women who previously delivered in a facility used a facility for their second delivery [29].

There was evidence of increasing facility delivery in this region over time, even in absence of the intervention: among women living in control catchment areas, facility utilisation increased from 72.3% in 2012 to 81.1% in 2016. Similar trends toward increasing facility utilisation for childbirth can be seen in the DHS surveys from 2004–05, 2010, and 2015–16 [36–38]. In Pwani Region, some of the trend toward increased utilisation of health facilities may have been due to region-wide quality improvement efforts, such as the pay for performance program that began in 2011 [39]. However, on top of these underlying trends, MNH+ had an additional positive affect on facility utilisation. Given the plethora of quality improvement projects occurring in Tanzania, this study benefited from clearly defined and randomly chosen controls in order to prevent major confounding from other, ongoing projects.

This study had several limitations. First, with only 12 clusters in each study arm there was potential for imbalance of unmeasured confounders between intervention and control groups. However, measured variables were similar between the two arms at baseline and there was no evidence that the parallel trends assumption was violated. Second, women in the control areas could have delivered in the treatment facilities, thus increasing the facility utilisation in control areas. However, we found that this occurred rarely: in only 2.7% of women at baseline and 1.8% at endline. This may be due to large (on average more than 10 kilometers) distance between the nearest study facilities. Third, the 24 health facilities included in this study were not chosen at random. They represent the facilities with the most deliveries in their district. Because it is unlikely that the facilities with fewer deliveries were higher functioning at baseline than the selected facilities, we do not expect that our results would have changed if implemented in these less busy

facilities. Finally, the potential mechanisms of effect, including the quality of antenatal care received were measured through maternal report, allowing for potential recall bias. If women in control facilities were more likely to misreport an increased receipt in ANC services, then this could have biased this finding.

This study provides evidence that health systems improvement efforts can potentially motivate women, especially past non-users, to use health facilities for delivery. Future health system interventions should continue to focus on and evaluate quality, as this focus has potential to both increase quality and utilisation, which in turn can lead to improved population health.

Acknowledgements

The authors express their sincere gratitude to the implementation team at Tanzania Health Promotion Support, particularly Mkambu Kasanga and Ua Ramadhani. The data collection and quality review throughout the study would not have been possible without the support of Angela Kimweri, Festo Mazuguni, Sabrina Hermosilla, Daniel Vail, Emilia Ling, Irene Mashasi, Martin Zuakulu and Ramadhani Abdul, in addition to our data collectors and field supervisors. We are also thankful for the support of the study co-investigators, Beatrice Byalugaba at the Pwani Ministry of Health, and all the District Medical Officers and healthcare providers who supported this study. We thank Jessica Cohen, Wafai Fawzi and Jigyasa Sharma for their thoughtful review and comments on the analysis and manuscript. Finally, and most importantly, we thank the women of Pwani Region for taking the time to share their experiences with us.

Trial registration

ISRCTN 17107760: <http://www.isrctn.com/>
ISRCTN17107760

Funding

NIH R01AI093182. No funding bodies had any role in study design, data collection and analysis, decision to publish, or preparation of the manuscript.

References

1. MDG Report 2015: Assessing progress in Africa toward the Millennium Development Goals. Addis Ababa, Ethiopia: United Nations Economic Commission for Africa, 2015.
2. Montagu D, Sudhinaraset M, Diamond-Smith N *et al.* Where women go to deliver: understanding the changing

E. Larson *et al.* **Effect of a quality improvement project on the use of facilities for childbirth**

- landscape of childbirth in Africa and Asia. *Health Policy Plan* 2017; **32**: 1146–1152.
3. Koblinsky M, Moyer CA, Calvert C *et al.* Quality maternity care for every woman, everywhere: a call to action. *Lancet* 2016; **388**: 2307–2320.
 4. Lee AC, Cousens S, Darmstadt GL *et al.* Care during labor and birth for the prevention of intrapartum-related neonatal deaths: a systematic review and Delphi estimation of mortality effect. *BMC Public Health* 2011; **11**(Suppl 3): S10.
 5. Moyer CA, Mustafa A. Drivers and deterrents of facility delivery in sub-Saharan Africa: a systematic review. *Reprod Health* 2013; **10**: 40.
 6. McKinnon B, Harper S, Kaufman JS, Bergevin Y. Removing user fees for facility-based delivery services: a difference-in-differences evaluation from ten sub-Saharan African countries. *Health Policy Plan* 2015; **30**: 432–441.
 7. Nyamtema AS, Urassa DP, van Roosmalen J. Maternal health interventions in resource limited countries: a systematic review of packages, impacts and factors for change. *BMC Pregnancy Childbirth* 2011; **11**: 30.
 8. Hunter BM, Murray SF. Demand-side financing for maternal and newborn health: what do we know about factors that affect implementation of cash transfers and voucher programmes? *BMC Pregnancy Childbirth* 2017; **17**: 262.
 9. Audo MO, Ferguson A, Njoroge PK. Quality of health care and its effects in the utilisation of maternal and child health services in Kenya. *East Afr Med J* 2005; **82**: 547–553.
 10. Gage AD, Leslie HH, Bitton A *et al.* Does quality influence utilization of primary health care? Evidence from Haiti *Glob Health* 2018; **14**: 59.
 11. Kruk ME, Leslie HH, Verguet S, Mbaruku GM, Adanu RM, Langer A. Quality of basic maternal care functions in health facilities of five African countries: an analysis of national health system surveys. *Lancet Glob Health* 2016; **4**: e845–e855.
 12. Larson E, Vail D, Mbaruku GM, Mbatia R, Kruk ME. Beyond utilization: measuring effective coverage of obstetric care along the quality cascade. *Int J Qual Health Care* 2017; **29**: 104–110.
 13. Nesbitt RC, Lohela TJ, Manu A *et al.* Quality along the Continuum: a health facility assessment of intrapartum and postnatal care in Ghana. *PLoS ONE* 2013; **8**: e81089.
 14. Sharma J, Leslie HH, Kundu F, Kruk ME. Poor Quality for Poor Women? Inequities in the Quality of Antenatal and Delivery Care in Kenya. *PLoS ONE* 2017; **12**: e0171236.
 15. Hanson K, McPake B, Nakamba P, Archard L. Preferences for hospital quality in Zambia: results from a discrete choice experiment. *Health Econ* 2005; **14**: 687–701.
 16. Kruk ME, Rockers PC, Tornorlah Varpilah S, Macauley R. Population preferences for health care in Liberia: insights for rebuilding a health system. *Health Serv Res* 2011; **46**: 2057–2078.
 17. Larson E, Vail D, Mbaruku GM, Kimweri A, Freedman LP, Kruk ME. Moving toward patient-centered care in Africa: a discrete choice experiment of preferences for delivery care among 3,003 Tanzanian women. *PLoS ONE* 2015; **10**: e0135621.
 18. Larson E, Hermsilla S, Kimweri A, Mbaruku GM, Kruk ME. Determinants of perceived quality of obstetric care in rural Tanzania: a cross-sectional study. *BMC Health Serv Res* 2014; **14**: 483.
 19. Karkee R, Lee AH, Binns CW. Bypassing birth centres for childbirth: an analysis of data from a community-based prospective cohort study in Nepal. *Health Policy Plan* 2013; **30**: 1–7.
 20. Kruk ME, Hermsilla S, Larson E, Mbaruku GM. Bypassing primary care clinics for childbirth: a cross-sectional study in the Pwani region, United Republic of Tanzania. *Bull World Health Organ* 2014; **92**: 246–253.
 21. Leonard KL. Active patients in rural African health care: implications for research and policy. *Health Policy Plan* 2013; **29**: 85–95.
 22. Kruk ME, Vail D, Austin-Evelyn K *et al.* Evaluation Of A Maternal Health Program In Uganda And Zambia Finds Mixed Results On Quality Of Care And Satisfaction. *Health Aff* 2016; **35**: 510–519.
 23. Rowe AK, de Savigny D, Lanata CF, Victora CG. How can we achieve and maintain high-quality performance of health workers in low-resource settings? *Lancet* 2005; **366**: 1026–1035.
 24. Semrau KEA, Hirschhorn LR, Marx Delaney M *et al.* Outcomes of a Coaching-Based WHO Safe Childbirth Checklist Program in India. *N Engl J Med* 2017; **377**: 2313–2324.
 25. Andersen RM. Revisiting the behavioral model and access to medical care: does it matter? *J Health Soc Behav* 1995; **36**: 1–10.
 26. Kruk ME, Hermsilla S, Larson E *et al.* Who is left behind on the road to universal facility delivery? A cross-sectional multilevel analysis in rural Tanzania. *TMIH* 2015; **20**: 1057–1066.
 27. Filmer D, Pritchett LH. Estimating wealth effects without expenditure data - Or tears: an application to educational enrollments in states of India. *Demography* 2001; **38**: 115–132.
 28. Zeger SL, Liang KY. Longitudinal data analysis for discrete and continuous outcomes. *Biometrics* 1986; **42**: 121–130.
 29. Benova L, Macleod D, Radovich E, Lynch CA, Campbell OMR. Should I stay or should I go?: consistency and switching of delivery locations among new mothers in 39 Sub-Saharan African and South/Southeast Asian countries. *Health Policy Plan* 2017; **32**: 1294–1308.
 30. Hotchkiss DR, Piccinino L, Malaj A, Berruti AA, Bose S. Addressing the phenomenon of bypassing in Albania: the impact of a primary health care strengthening intervention. *Int J Health Plann Manage* 2007; **22**: 225–243.
 31. Rockers PC, Kruk ME, Laugesen MJ. Perceptions of the health system and public trust in government in low- and middle-income countries: evidence from the World Health Surveys. *J Health Polit Policy Law* 2012; **37**: 405–437.

E. Larson *et al.* **Effect of a quality improvement project on the use of facilities for childbirth**

32. Rockers PC, Wilson ML, Mbaruku G, Kruk ME. Source of antenatal care influences facility delivery in rural Tanzania: a population-based study. *Matern Child Health J* 2009; **13**: 879–885.
33. Henry EG, Thea DM, Hamer DH *et al.* The impact of a multi-level maternal health programme on facility delivery and capacity for emergency obstetric care in Zambia. *Glob Public Health* 2018; **13**: 1481–1494.
34. Lee ACC, Lawn JE, Cousens S *et al.* Linking families and facilities for care at birth: what works to avert intrapartum-related deaths? *Int J Gynaecol Obstet* 2009; **107**(Suppl): S65–S88.
35. Ensor T, Green C, Quigley P, Badru AR, Kaluba D, Kureya T. Mobilizing communities to improve maternal health: results of an intervention in rural Zambia. *Bull World Health Organ* 2014; **92**: 51–59.
36. Tanzania Demographic and Health Survey 2004–05. Dar es Salaam, Tanzania: National Bureau of Statistics (NBS) [Tanzania] and ORC Macro, 2005.
37. Tanzania Demographic and Health Survey and Malaria Indicator Survey 2015–2016 Final Report. Dar es Salaam, Tanzania and Rockville, Maryland, USA: Ministry of Health, Community Development, Gender, Elderly and Children (MoHCD-GEC) [Tanzania Mainland], Ministry of Health (MoH) [Zanzibar], National Bureau of Statistics (NBS), Office of the Chief Government Statistician (OCGS), and ICF, 2016.
38. DHS. Tanzania Demographic and Health Survey 2010. Dar es Salaam: National Bureau of Statistics (NBS) [Tanzania]; ICF Macro, 2011.
39. Binyaruka P, Patouillard E, Powell-Jackson T, Greco G, Maestad O, Borghi J. Effect of paying for performance on utilisation, quality, and user costs of health services in Tanzania: a controlled before and after study. *PLoS ONE* 2015; **10**: e0135013.

Supporting Information

Additional Supporting Information may be found in the online version of this article:

Appendix S1. Study eligibility and analysis flow diagram.

Appendix S2. Descriptive statistics of the sub-group of women with a previous home delivery, Pwani region, Tanzania (2011–2012 and 2015–2016).

Appendix S3. Effect of MNH+ intervention on facility utilisation for childbirth, unadjusted and adjusted difference-in-difference analyses stratified by risk level.

Appendix S4. Effect of the MNH+ intervention on intermediary outcomes (full study population).

Appendix S5. Methods and results of sensitivity analyses.

Appendix S6. Changes in place of delivery from baseline to endline by intervention status.

Appendix S7. Example of the delivery room in a study facility before (A) and after (B) quality improvement activities.

Corresponding Author Elysia Larson, Department of Global Health and Population, Harvard T.H. Chan School of Public Health, 665 Huntington Ave, Building 1, 11th floor, Boston, MA, USA. E-mail: elarson@mail.harvard.edu